

The problem we solve!

The questionnaire on the topic:

Will QiTASC be your future partner in
end-to-end test automation?

Contact us:

www.qitasc.com

info@qitasc.com

+43 1 810 21 73

Diefenbachgasse 53

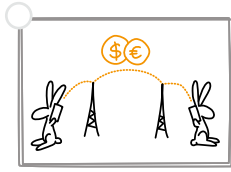
1150 Vienna

Austria



Who are you? Who is your team?

Which industry are you in?



Information & telecommunications



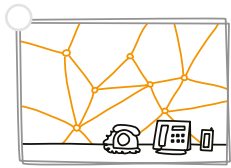
E-commerce



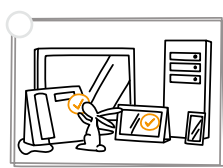
Finance, rating, charging: banks, insurances



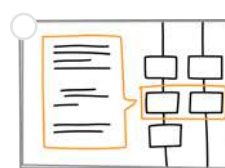
IoT: smart devices, healthcare (KIS, smart hospital), smart city



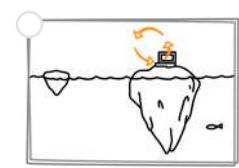
Transport: logistics, warehousing, cars & trucks



Testing, inspection & commissioning



Food



Other

What kind of product do you develop?

Apps, hardware, software, services, etc.

Which development approach is being used?

E.g. waterfall model, feature or test-driven development, agile with sprints every x weeks, etc.

Which business model do you pursue? Various answers possible.

Testing as a service

One service provider takes over the entire test project.

In-house testing

Test automation solution and training are purchased, everything else is implemented internally. A third-party provider serves as 3rd line support (complex challenges) and for further training.

Partial in-house testing

Test automation solution and training are purchased. Test cases are developed and executed internally. A third-party vendor keeps the test infrastructure up and running.

What form of quality assurance do you rely on?

Manual testing

Base team: test manager, test and system experts, automated setup developers

Automated test pipe

All automated. Base team, product and test pipe experts, test pipe developer

Testing is automated

Base team

External service provider

Takes over testing, provides quality statistics

Which of the following features does your product offer?

- Interaction via apps
- Interaction via web interface: self care, customer care, etc.
- Interaction via messages: email, SMS, MMS, USSD, announcements, menus, etc.
- Configure interfaces: SOAP, REST, SSH, etc.
- Invoices, records with charging data
- Change data structures: customer records, service data, etc.
- Product interaction with other services
- Message flows between systems
- Correlation between product configuration, messages and charging data
- Standards must be compared with system data
- Load and stress behaviour
- Expected impact on other systems
- Negative tests to verify that there is no impact on other systems

Which technologies must be used for this in quality assurance?



What standard do you set in development & quality of your product?

Type of required tests?

End-to-end functional test/acceptance test

Monitoring tests

Usability tests

Load/stress tests

Verification tests: charging/ clearing, traces/ message sequences, changes in the database, recordings

Regression test

Migration test

Other

Are there also tests in the live environment?

Yes

No

How large is your test team? How are the resources for internal quality assurance allocated?

___ software developer

___ project manager

___ test engineers

___ IT experts

___ service/product experts

___ trainees

___ external

⇒ team in total:

How many test cases are there in a project?

When was the last innovation of your product? When was this innovation tested?

How often are the key features of your product tested as standard?

24/7

1 x per week

1 x per month

With a new release

Full regression test is performed ___ per year

How is the current test infrastructure organised?

Complete test environment in the lab, end-to-end tests with real devices

In the live environment, an installation is used as a test reference

Essential modules in the laboratory, some modules only as simulation

Testing environment fully simulated

No reference in the laboratory, only tests in the customer environment

Other:

What is your percentage of fully automated testing compared to manual testing?



Test pipe

Test preparation

Test execution

Test verification

Test reporting

Manual parts vs. full automation



How do you ensure the quality of your product?

- End-to-end tests
- Functional black box test
- Functional white box test
- Functional grey box test
- Accounting, rating & charging test
- Simulated interface test
- Unit tests, final test at the customer
- Module & unit tests
- Integration test
- Load & stress test
- User interoperability test
- Crowd test
- During operation: migration test

“Quality is never an accident.

It is always the result of intelligent effort.”

(John Ruskin)

Our products offer:

Quality assurance

Test automation

Faster time to market for products

More accurate verification

Replacing repetitive actions with software, allowing experts to focus on defects and problems.

Increase the performance of testers through software

Free up development resources with a working automation solution

Reporting & verification

Cloud based

Test hardware

Our services offer:

Test concept

Training

Test resources

Test projects (TaaS)

Test libraries

Build on the QiTASC Test Automation Framework!

Working with QiTASC, brings your business the following benefits:

- ⇒ Cost and time savings due to a faster test procedure
- ⇒ Reduced frustration among test team members
- ⇒ Increase in the value of your own product
- ⇒ Increase in end-customer loyalty due to higher quality standard and reduced product failure
- ⇒ Test strategy for digital companies with innovative products that also consider themselves modern
- ⇒ Easier to combine a well-tested product with complementary products and thus simplify sales
- ⇒ Optional outsourcing of the complete test process
- ⇒ Covid-safe and carbon-neutral lab for remote testing
- ⇒ Gain space to focus on further development of the product
- ⇒ Focus on your own core business thanks to the test infrastructure and test tools supplied by us.

We look forward to [sharing](#) the results of your completed questionnaire!

